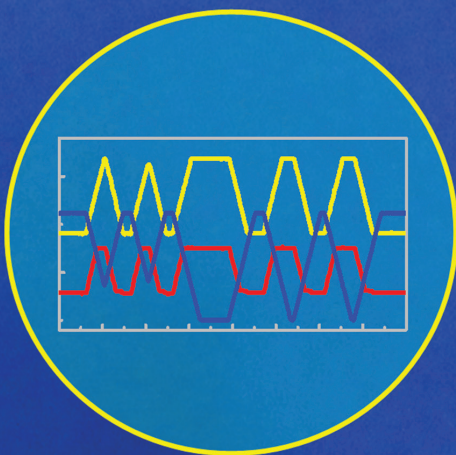
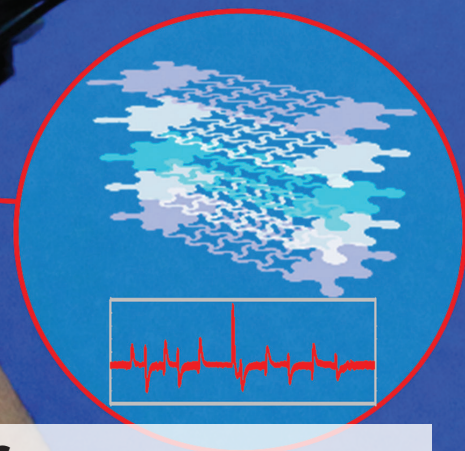
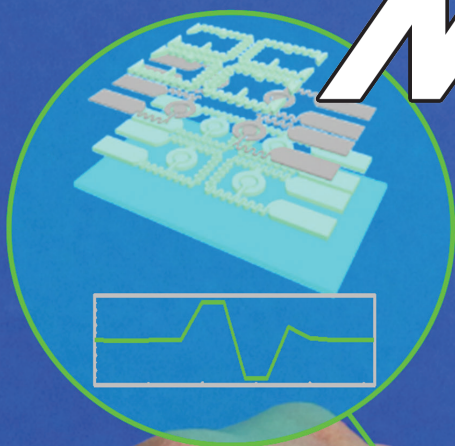


ADVANCED FUNCTIONAL MATERIALS



WEARABLE ELECTRONICS

A transparent and stretchable interactive human machine interface (iHMI) based on patterned graphene (GP) heterostructures is developed by D.-H. Kim and co-workers on page 375. The conductive/piezoelectric GP heterostructures enable the iHMI to have high transparency, excellent performance, low power consumption, and superb mechanical deformability. The control of a robot arm for various motions and feedback stimulation upon successful executions of commands are demonstrated using the wearable iHMI system.